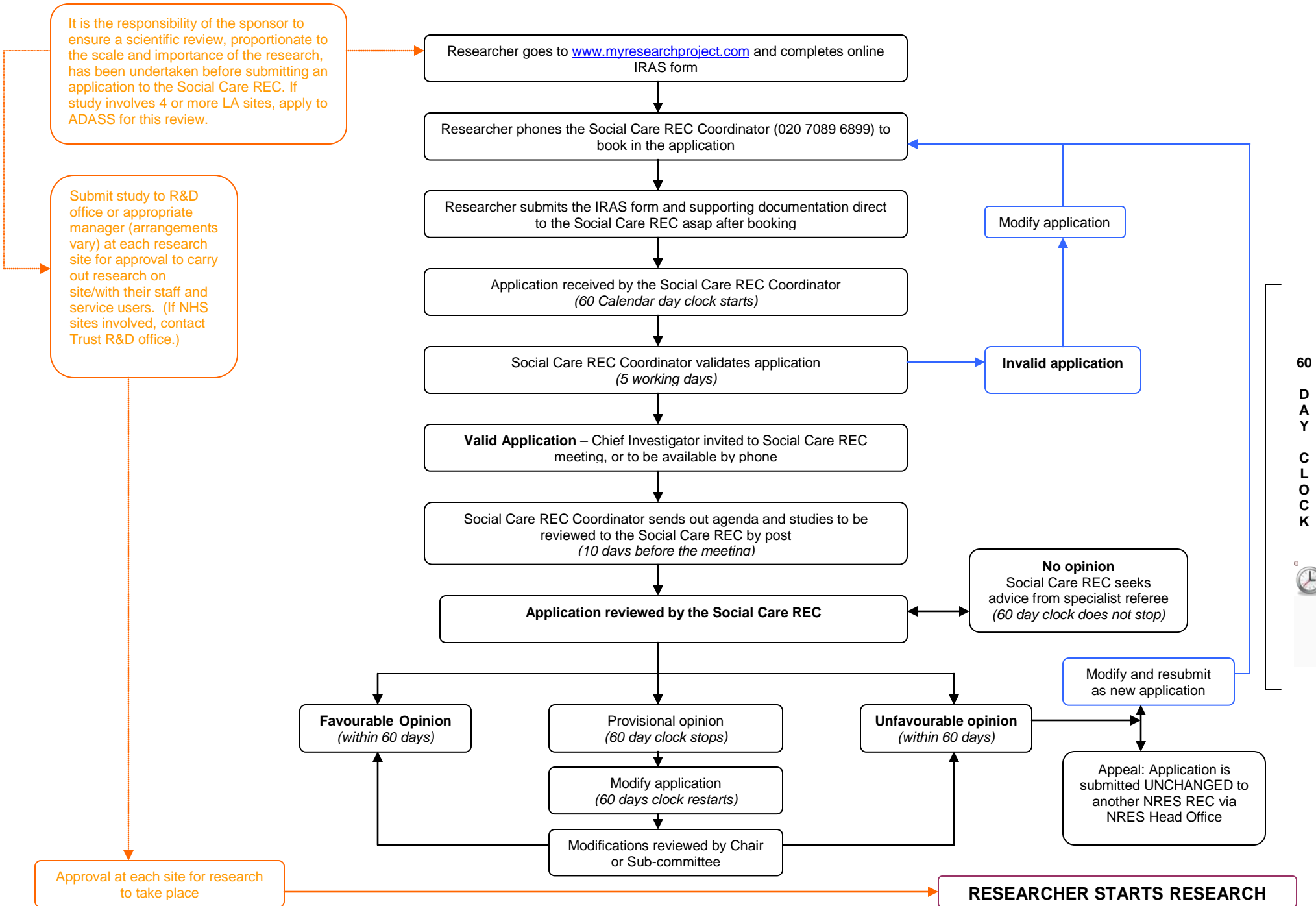


Quick Guide for Submitting Applications to the Social Care Research Ethics Committee (SCREC)



It is the responsibility of the sponsor to ensure a scientific review, proportionate to the scale and importance of the research, has been undertaken before submitting an application to the Social Care REC. If study involves 4 or more LA sites, apply to ADASS for this review.

Submit study to R&D office or appropriate manager (arrangements vary) at each research site for approval to carry out research on site/with their staff and service users. (If NHS sites involved, contact Trust R&D office.)

Approval at each site for research to take place

RESEARCHER STARTS RESEARCH